

# Equine News: October 2023


Equine Flu Awareness Week 9-16th October: Ensure your horse is protected



### What are the symptoms?

Clinical signs of equine influenza include:

- A fever (temperature over 38.5C)
- Nasal discharge
- A dry, hacking cough
- Depression, loss of appetite and weakness



In 2022 EIDS reported 30 flu outbreaks in the span of just one month!

In 2021 infected premises were confirmed in a staggering 23 counties across Great Britain!

Under favourable weather conditions flu can spread up to 5km!



## Laminitis Prevention Club

### Winter 'Good Doers' programme

With such high rates of grass growth seen this summer we are seeing a lot of overweight horses and ponies this Autumn. We would urge you all to take action to ensure your horse or pony loses weight over the winter to help prevent laminitis in the Spring.



The good news is we are here to help. The XLVets community of independent vet practices have teamed up with independent nutritionist Jennifer Little to work together to support owners of 'good-doing' horses. Owning a good-doer can be challenging and we'd like to help your horse be in the best shape possible before next year's spring grass.

This winter campaign of support incorporates monthly webinars, information from an independent equine nutritionist, sharing experiences with other owners along the way and veterinary input from us. We would like to see as many clients as possible taking part in this programme.

The programme is included FREE for members of the Laminitis Prevention Club, so please get in touch and join today and start the journey to feeling more confident about reducing the risk of laminitis and managing your horse or pony's body condition.

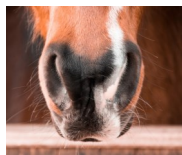
**Option 1: Full membership £100 per year includes:** Blood sampling and laboratory fee for initial Insulin testing (normal/zone visit charges apply) • Three visits per year from Horse Weighbridge North East to weigh and fat score your horse or pony (Autumn, Spring and Summer) • Membership of our laminitis prevention club which provides **access to the winter good doers programme**, fact sheets; newsletters; social media group to provide information, support and up to date research; dedicated client meetings exclusive to members; and a welcome goody bag. • 10% discount on further insulin testing if required.

**Option 2: Club only membership fee £20 includes:** Membership of our laminitis prevention club which provides **access to the winter good doers programme**, fact sheets; newsletters; social media group to provide information, support and up to date research; dedicated client meetings exclusive to members; and a welcome goody bag. Weighing services and Insulin testing on a pay as go basis.

## Autumn Open Evening: Save the Date!

"A Breath of fresh air– a guide to maintaining respiratory health"

**Thursday 30th November 7pm  
Hexham Auction Mart**



Talks on infectious respiratory disease, the management of equine asthma and respiratory disease as a cause of poor performance.

## Payment link

You may have been asked to pay via "an online payment link" recently. This link (Nordhealth) connects directly with our practice management system, providing a secure and accurate method of processing your payments.

If you wish to take advantage of the 5% discount for payment at the time of treatment please let us know. Payment must be made within 24 hours of the visit.

We are all still getting used to this new system so please be patient and just give us a ring if you have any questions or difficulties we will be pleased to help.



Nordhealth Pay

We are redirecting you to our secure payment service provider to make the payment. Please wait a few seconds...

**Don't forget to look after your old friend this autumn and release their inner youth!**

Old friends Autumn watch for October and November 2023 open to all horses over 15 years old:



- Twice annual visit & health check (Autumn and Spring)
- Full standard blood profile (ACTH included for horses on treatment only)
- Gold standard dental including sedation
- 10% off vaccination and selected long term medication
- Annual worming plan including egg counts and reminders (excluding winter and tape-worm treatment)

**All this for just £180! (better than half price!)**

**Terms and conditions:** Annual membership fee or renewal must be paid in full prior to Autumn Watch visit. The discount on long term medications applies to selected pharmaceutical products only; please ask for details. Discounts on vaccination and long term medication apply for 12 months.

## Zone Visits October and November

Zone 1 (NE44, NE46-47, NE49 & DH8) - Mon 2nd Oct, Mon 6th Nov

Zone 2 (NE19, NE45 & NE48) - Mon 9th Oct, Mon 13th Nov

Zone 3 (NE1-7, NE12-15, NE18, NE20, NE22-30 & NE61) - usually Sally - Thurs 5th Oct, Thurs 2nd Nov usually Liz/Euan Mon 16th Oct, Mon 20th Nov

Zone 4 (NE8-11, NE16-17, NE21, NE31-43)- Mon 23rd Oct, Mon 27th Nov

Zone 5 (DH2-7, DH9 & DL13-16) - Tues 31st Oct, Tues 28th Nov

Zone visits offer a reduced price visit of £20 for one owner and £10 for more than one owner at same yard for planned routine veterinary work.

## Next Dental Clinic: Wednesday 25th October

The dental clinic allows us to work more efficiently and so we are able to pass on that saving to you with reduced price routine dentistry.



Dental clinics are for routine dental procedures only, all carried out under sedation.

**Dental clinic routine dental inc. sedation £70 inc VAT**

**Dental clinic dental plus diastema flush and sedation £95 inc VAT**

**Dental clinic diastema flush only inc sedation £35 in VAT**

**Terms and conditions:** Payment must be made at the time of treatment. Please arrive at your allocated time and collect your horse promptly after treatment.